

SPECIALTY MAINTENANCE PRODUCTS:



POOL CLOSED FOR MAINTENANCE

BARRIER TAPE

Safe-T-Tread - by 3M

Sometimes called grip tape it has many uses around a pool. 3M's product is still the best, it is a peel and stick material that can be used virtually any place a slip hazard needs to be eliminated. Use it on walkways, step treads slippery tiles and some customers have used it on the end of an old dive board.

Product is supplied in various widths in rolls of 60 feet. There are two techniques for success with Safe-T-Tread at an aquatic center. First the product will work in wet areas (even under water) if 3M's Edge Seal is used to prevent water migrating underneath. And second, always cut corners to round since 90° corners seem to peel up easier.

| Item No | Description | Price |
|----------|---|----------|
| 12 01 30 | 2" x 60' roll (black only) 3M | \$126.50 |
| 12 01 31 | 4" x 60' roll (black only) 3M | \$238.50 |
| 12 01 32 | Edge Seal (150 ml tube) 3M | \$29.95 |
| 12 01 33 | 12" wide - per foot - black only 3M | \$14.95 |
| 12 01 43 | Pool Closed For Maintenance Barrier Tape, 3" x 750' | \$59.05 |

Stainless Steel Treatment - Cleaning & Corrosion Prevention

Stainless Steel, over time form a passive layer of chromium that prevents surface corrosion and rust, making the material more resistant to corrosion the older it gets. Spectrum pool products as of 1 January, 2010 also come treated with an exclusive product called Spectra Shield, which works by coating the Stainless Steel, further increasing its corrosion resistance. It is an undetectable, microscopic coating that cannot be removed by water or cleaning. The best news is, it can be applied to older stainless steel, once it has been cleaned and dried, to increase its corrosion resistance and reduce cleaning requirements.

Spectrum System 1 is a liquid cleaner for pitted or stained (rusty) stainless and Spectrum System 2 Gel is a similar cleaner, only thicker for use on vertical surfaces. It needs to cling allowing time for the chemical to do the work. Apply the cleaner, allow time for the product to dissolve the stains and rinse off with water. 3050 is a more concentrated form of the product used primarily for cleaning stainless steel boilers.



SPECTRA CLEAN SYSTEM 1 SPECTRA CLEAN SYSTEM 2 SPECTRA SHIELD

View Stainless Steel Care Information Sheets on our website.

| Item No | Description | Price |
|----------|-----------------------------------|----------|
| 12 01 37 | Spectrum System 1 Refill 1 Gallon | \$129.35 |
| 12 01 42 | Spectrum System 1 refill 5 Gallon | \$393.35 |
| 12 01 38 | Spectrum System 2 Gel, 1 Gallon | \$147.75 |
| 12 01 44 | Spectrum System 2 Gel, 5 Gallon | 478.00 |
| 12 01 39 | 3050 1 Gallon | \$169.95 |
| 12 01 40 | 3050 5 Gallons | \$552.10 |
| 12 01 41 | Spectra Shield #57373 1 Gallon | \$235.00 |

3M Plastic Scrubbies

| Item No | Description | Price |
|----------|---|---|
| 12 01 26 | Fine Stainless Grade Scrubby White (Use where corrosion has not broken surface of stainless) | \$36.95 (10 pieces) \$166.30 (box of 60) |
| 12 01 27 | Medium Stainless Grade Scrubby Maroon (Use where corrosion has got hold) | \$38.85 (10 pieces) \$174.65 (box of 60) |

A/B Epoxy Putty

This is an excellent product for aquatic centers. A/B Putty hardens in wet areas (even under water) and adheres very well to virtually any substrate. Uses around an aquatic center include: temporary patch on a filter, refasten a tile that has come loose (change room floor or under water), filling a crack in pool concrete, etc.

| Item No | Description | Price |
|----------|-------------------|---------|
| 12 01 10 | 14 oz Epoxy Putty | \$26.25 |



Magic Lube II

Magic Lube II is a high quality silicone lubricant that does not dry or deteriorate from contact with chlorinated water. It works very well on both metal and plastics, providing both corrosion protection and lubrication.

Recommended as a lubricant on all stainless bolts/fasteners used on deck and deck equipment. Just a dab on the threads prevents corrosion and to ensures bolts will come apart down the road when needed.



| Item No | Description | Price |
|----------|------------------------|---------|
| 12 01 21 | 5oz tube magic lube II | \$24.95 |

COMMERCIAL POLES AND ACCESSORIES

Poles

| Model No | Description | Price |
|----------|-----------------------------|----------|
| #5432 | HD 3 piece telescopic pole* | \$315.25 |

*Pole extends from 9' to 24', and comes with an 8' extension. Can be used with or without extension. As with all the poles the end is a standard size to fit with all brushes and skimmers



SKIMLITE POLE

| | | |
|---------|------------------------------------|----------|
| R191090 | Aluminum Telescopic Pole 12' - 24' | \$105.50 |
| R191046 | Telescopic pole 8' - 16' | \$62.25 |
| R191106 | 1 piece pole 12' | \$47.48 |



Pole Parts/Accessories

| Model No | Description | Price |
|----------|---------------------------------------|---------|
| RL803 | Metal cams for telescopic pole | \$15.85 |
| RL170 | Replacement Delrin spring clips | \$2.38 |
| BE7201 | Anodized aluminum pole hangers (pair) | \$13.45 |



RL803

Leaf Skimmers and Rakes

| Model No | Description | Price |
|----------|---|---------|
| RL126 | Flat Heavy Duty Skimmer, 3/8" Solid Aluminum Anodized Frame | \$31.65 |
| RL122 | Deep Net Leaf Rake, 3/8" Solid Aluminium Frame | \$41.15 |



RL126

RL122

Thermometers

All plastic thermometers use no glass and no mercury making it a safe choice for around the pool.

| Model No | Description | Price |
|----------|-------------|---------|
| 127BP | Thermometer | \$13.65 |



4 MAINTENANCE & CLEANING EQUIPMENT

BRUSHES

Algae Brushes

Stainless steel bristles and snap adaptor handles.

| Model | Description | Price |
|-------|-------------------------------|---------|
| RL709 | 9" Algae Brush S.S. Bristles | \$31.65 |
| PS316 | 10" Algae Brush S.S. Bristles | \$36.75 |
| RL718 | 18" Algae Brush S.S. Bristles | \$51.70 |

Pool Brushes

All have Poly bristles.

| Model | Description | Price |
|-------|---------------------------------|---------|
| RL902 | 18" Pool Brush | \$23.25 |
| RL905 | 24" Blue Nylon Bristles, Curved | \$49.55 |

Brushes for Cleaning

| Model | Description | Price |
|----------|---|---------|
| 582T-10 | 10" Acid Brush, no pole | \$19.50 |
| 582BL-10 | 10" Blue Deck Brush, no pole | \$19.95 |
| 54PT | handle for acid or deck brush, threaded | \$9.75 |

POOL VACUUM ACCESSORIES

Vacuum Hoses

| Item No | Description | Price |
|------------|---|----------|
| WABWHD-1.5 | 1 1/2" D x 50' L Commercial HD Vacuum Hose | \$195.00 |
| WABWHD-2 | 2" D x 50' L Commercial HD Vacuum Hose FOB Factory | \$285.00 |
| 90122 | 1 1/2" Replacement hose cuff - End fitting | \$7.90 |
| 90921 | 2" Replacement hose cuff- End fitting | 15.35 |
| R221056 | 165 Hose Hangers - Pair - Plastic | \$10.60 |

Hose to Wall Fittings

| Item No | Description | Price |
|----------|--|--------|
| 14 08 08 | Plastic 1 1/2" MNPT x 1 1/2" Hose Barb | \$3.95 |
| 14 08 09 | Plastic 2" MNPT x 2" Hose Barb | \$6.75 |

PVC Lay Flat Discharge Hose

| | | |
|-----------|---------------------------------|---------|
| BD2105-25 | 25' by 1 1/2" ID Discharge Hose | \$18.60 |
| BD2105-50 | 50' by 1 1/2" ID Discharge Hose | \$35.00 |
| 14 08 52 | 25' by 2" ID Discharge Hose | \$39.95 |
| 14 08 53 | 50' by 2" ID Discharge Hose | \$64.50 |
| BD7208 | SS Gear/Band Clamp 1 1/2" | \$2.25 |
| BD7207 | SS Gear/Band Clamp 2" | \$2.45 |



R221056



90121
90122



WABWHD



Hose Barb



Discharge Hose



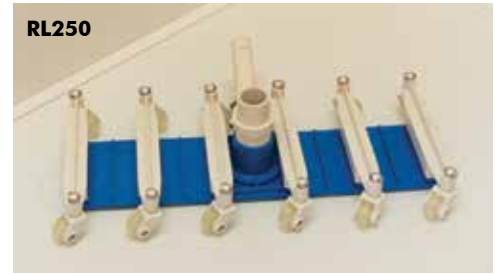
Band Clamp

VACUUM HEADS

Economy Commercial Pool Vac

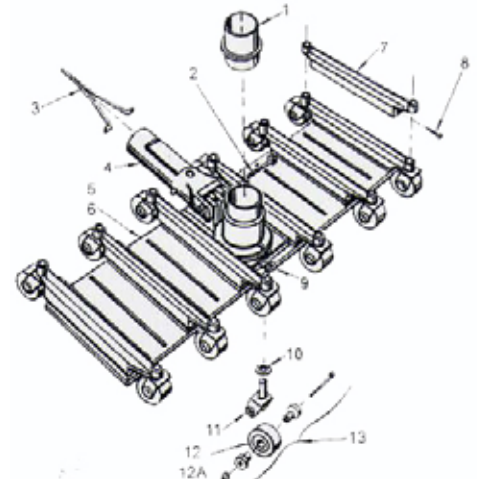
RL 250 is an economy vacuum head designed for commercial pools. Commercial pool features include: adjustable polyurethane wheels, 19" body, fits either 1½" or 2" hose and swivel adaptor (for 1½" only) allows hose to move freely without twisting. Snap-adapt handle fits onto pole easily and all parts can be replaced as needed.

| Model No | Description | Price |
|----------|---|----------|
| R201126 | 19" wide polyethylene vacuum head, swivel wheels. Fits 1½ or 2" hose. Economy Vacuum Head RL 250 | \$182.35 |



Parts Vac Head RL250

| Model No | Dia. # | Description | Price |
|----------|--------|---------------------------------------|---------|
| R201566 | #1 | Swivel Adapter | \$6.06 |
| R22001 | #3 | Delrin spring clip | \$2.00 |
| R201476 | #4 | Snap-Adapt handle (Plastic) | \$5.30 |
| R201408 | #4 | All metal (steerable) Snap-Adapt *152 | \$45.38 |
| R03032 | #7 | Castor Support | \$7.86 |
| R03058 | #9 | SS Retainer clip | \$7.86 |
| R201626 | #10 | Adjustment washers (set of 8) | \$3.35 |
| R03026 | #11 | SwivelCastor | \$7.86 |
| R03021 | #12 | Platic Wheel | \$2.48 |
| R201606 | #13 | Axle Assembly | \$4.43 |



Herculean 18" Vacuum Head

There are two identical models of this heavy duty commercial vacuum head. The chrome plated brass (CPB) model is the most expensive, most durable and heaviest model. The anodized aluminum (AL) version is cheaper and lighter, but otherwise identical, and uses the same parts. The wipers, brush and wheels are height adjustable, and the brush is spring loaded. **Please specify 1½" or 2" vacuum hose inner diameter with order.**

| Item No | Description | Price |
|----------|-----------------------------------|----------|
| 5116-BRA | Herculean Vacuum Head(CPB) | \$697.50 |
| 15016 | Replacement tires (4) | \$57.85 |
| 15012 | Replacement brush | \$121.85 |
| 15017 | Replacement wipers (2) | \$23.75 |
| 15015 | Wheel Eccentric (4) (White Nylon) | \$43.50 |
| 15003 | 1 1/2 or 2" Hose Adaptor | \$73.05 |
| 5116-ALA | Herculean Vacuum Head (AL) | \$569.25 |



4 MAINTENANCE & CLEANING EQUIPMENT



Fairlocks Vacuum Head

Streamlined shape allows the Fairlocks head to move across the pool bottom at a good pace with little or no stirring up of debris. Its body design articulates at the center allowing it to get right into corners. This 19 inch vacuum head is 100% polycarbonate making it tough enough for commercial pool use yet light to move or lift off the bottom. Supplied with 1½" & 2" hose fittings.

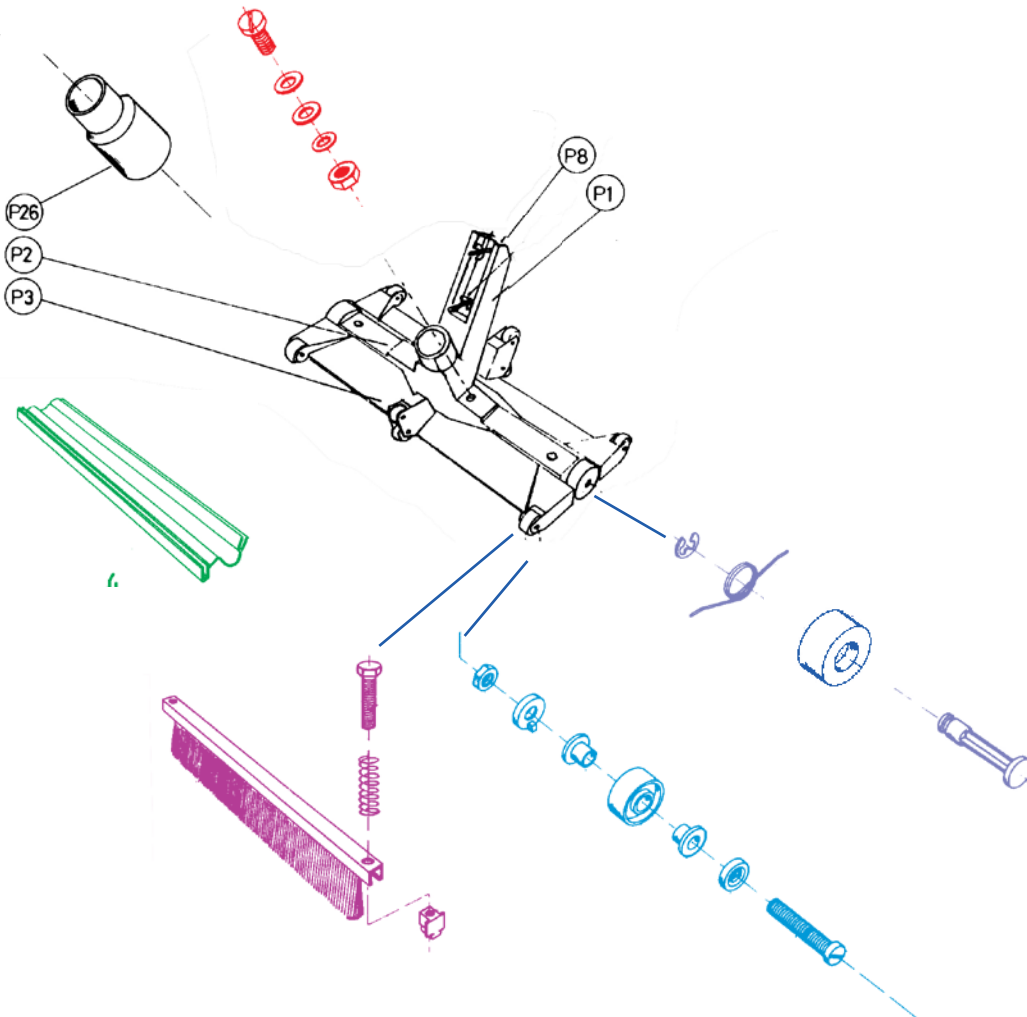
| Model No | Description | Price |
|-----------|------------------------|----------|
| Fairlocks | Commercial Vacuum Head | \$245.00 |

Fairlock Vacuum Head Parts

| | | |
|-----|---------------------|---------|
| P1 | Handle | \$42.50 |
| P2 | Centre body | \$29.25 |
| P3 | Flap | \$38.50 |
| P8 | Weight | \$63.50 |
| P26 | Adaptor cuff 2 x 1½ | \$10.65 |

Fairlocks Parts Packages

| | | |
|-----------------|---|---------|
| "A" Pack | Flap Seal Kit | \$34.50 |
| "B" Pack | Fasteners for P1 Handle | \$9.65 |
| "C" Pack | 2 Large Replacement Wheels (for center body) | \$14.60 |
| "D" Pack | Brush Kit | \$55.00 |
| "E" Pack | 1 Small Wheel with hardware (used on flaps) | \$11.35 |
| "F" Pack | 3 Small Replacement Wheels only (used on flaps) | \$11.75 |
| "G" Pack | Hardware For 2 Large Wheels (C Pack wheels) | \$11.75 |



MANUAL POOL VACUUMS *by Spectrum*

Portable Vacuum - on stainless cart:

Savage Vacuum pump features a stainless steel cart and a StaRite 1 HP pump. The unit is supplied with 50 foot cord, waterproof switch and plugs into a standard 115 volt outlet. Suction is 1½ inch complete with check valve discharge is fitted with a gate valve and hose bib for priming.

Also available in 1½ & 2 HP using 2 inch suction and discharge; 30 to 60% more flow makes vacuuming quicker, saving money over time.

Note: vacuum head, pole and hose are sold separately. **FOB Factory**

| Item No | Description | Price |
|---------|--------------------------------|-----------|
| 11100 | Savage Vacuum 1 HP(115 V) 1½ " | \$2595.75 |
| 11110 | Savage Vacuum 1½ HP (230) 2" | \$2853.35 |
| 11120 | Savage Vacuum 2 HP (230V) 2" | \$2920.70 |



Portable Vacuum with Filter *by Spectrum*

BKP vacuum cart is an excellent design. This vacuum is compact, sturdy and stable yet has a very small footprint; 20 inches wheel to wheel which makes it easy to wheel through doorways and store when not in use. The BKP component list includes: stainless filter, StaRite pump, stainless steel cart and non-marking tires. One HP unit uses a 105 sq foot filter (5000 g/h) and 2 HP use 155 sq. ft. filter (8000 g/h). **FOB Factory**

| Item No | Description | Price |
|-----------|---------------------------------|-----------|
| 10700 | BKP Vacuum 1 HP(110 V) 1½ " | \$3762.80 |
| PLE-PH105 | Replacement 105 sq ft cartridge | \$193.75 |
| 10720 | BKP Vacuum 2 HP (220V) 2" | \$4151.20 |
| PLE-PH155 | Replacement 155 sq ft cartridge | \$292.05 |



Pricing, product information & delivery for gas powered vacuums up to 5 HP available on request.

Portable Vacuum with Filter

This is an economy version of the manual vacuum cart with a filter. It comes with a ¾ HP SuperFlo pump set up for 115 volt single phase operation and a 100 square foot cartridge filter. Should be used with vacuum heads which are a maximum of 19" wide, and set up for 1 ½" vacuum hose. The cart is powder coated steel, with rubber wheels and 100' of electrical cord. Vacuum head, hose and pole sold separately. **FOB Factory**

| Item No | Description | Price |
|--------------|----------------------------------|-----------|
| WIPFVPC | Portable Filter Vacuum Pump Cart | \$2511.00 |
| PLE-051-9130 | Replacement Filter Cartridge | \$174.60 |



ROBOTIC VACUUM LINE

Maytronics Robotic Vacuum Line

Maytronics units are zero depth compatible and come with a tangle free swivel cord. Simply choose the cycle time, cord length and control method on the robot that is best sized for you pool. Feel free to call for advice if you need any help choosing a model for you facility.

Dolphin H50 by Maytronics

- Cord Length 60'
- Cord Swivel included
- Wall Climbing yes
- Air Sensor yes
- Filter Bag fine
- Cycle Time 3 hours
- Remote no
- Caddy Cart & included transformer
- Warranty 1 year,

Price \$1,929.00

While supplies last



Wave 75 by Maytronics

- * Cord Length 75'
- * Cord Swivel included
- * Wall Climbing yes
- * Air Sensor yes
- * Filter Bag fine
- * Cycle Time 2 & 3 & 4 hours
- * Remote yes
- Caddy Cart & included transformer
- Warranty 3 year, bumper to bumper

Price \$2678.00



Wave 100 by Maytronics

- Cord Length 115'
- Cord Swivel included
- Wall Climbing yes
- Air Sensor yes
- Filter Bag Fine
- Cycle Time 4 & 5 & 6 hours
- Remote yes
- Gyroscopic line by line cleaning
- Caddy Cart & transformer included
- Warranty 3 year bumper to bumper

Price \$4299.00



Wave 150 by Maytronics

- Cord Length 114'
- Cord Swivel no
- Wall Climbing no
- Air Sensor no
- Filter Bag Fine
- Cycle Time 4 & 5 & 6 hours
- Remote yes
- Random Pattern Cleaning
- Caddy Cart & transformer included
- Warranty 3 year limited to PS/C/M/PP

Price \$6941.00



Wave 200 XL by Maytronics

- Cord Length 114'
- Cord Swivel no
- Wall Climbing no
- Air Sensor no
- Filter Bag fine & coarse
- Cycle Time 1-8 hours
- Remote yes
- Gyroscopic line by line cleaning
- Caddy Cart & included transformer
- Warranty 3 year, bumper to bumper

Price \$9789.00



Dolphin Caddy

9996098 - Assy

Price 219.00



AQUA PRODUCTS POOL VACUUMS

The Aqua Products vacuum line features brushless motors, durable materials of construction, customizable running times, gyro based programming on some models, and unitized construction for ease of maintenance. With the ability to program run times and the long cords, these units can be customized to work in any pool. Check and compare features, cord lengths and prices.

DuraMax Junior TRC by Aqua Products

- Cord Length 100'
- Cord Swivel Included
- Wall Climbing Yes
- Air Sensor Yes
- Filter Bag Fine
- Cycle Time 1-7 hours or continuous
- Remote Yes
- Caddy Cart & transformer Included
- Warranty 2 year, First year bumper to bumper

Price \$2,063.97

25% OFF



DuraMax RC by Aqua Products

- Cord Length 120'
- Cord Swivel Yes
- Wall Climbing Yes
- Air Sensor Yes
- Filter Bag Fine
- Cycle Time 1-7 hours or continuous
- Remote Yes
- Caddy Cart & transformer Included
- Warranty 2 year, First year bumper to bumper

Price \$4,151.37

25% OFF



AquaMax by Aqua Products

- Cord Length 100'
- Cord Swivel No
- Programming Gyro
- Wall Climbing Yes
- Air Sensor Yes
- Filter Bag Fine
- Cycle Time 1.5 & 2 & 2.5 hours
- Remote Yes
- Caddy Cart & transformer Included
- Warranty 2 year, First year bumper to bumper

Price \$3,727.50

25% OFF



Ask about
BLOWOUT
prices on
remaining
instock inventory**

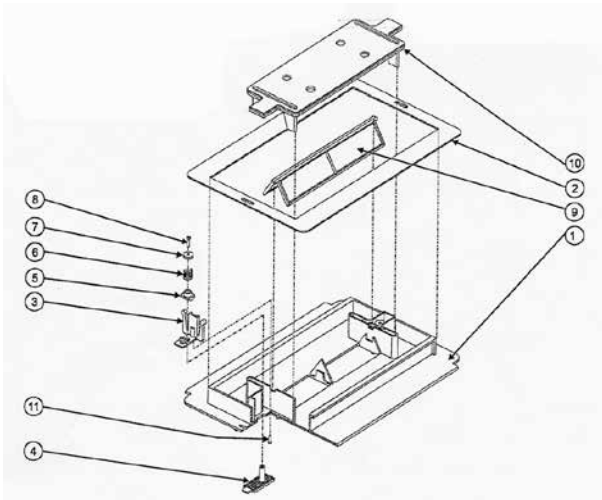
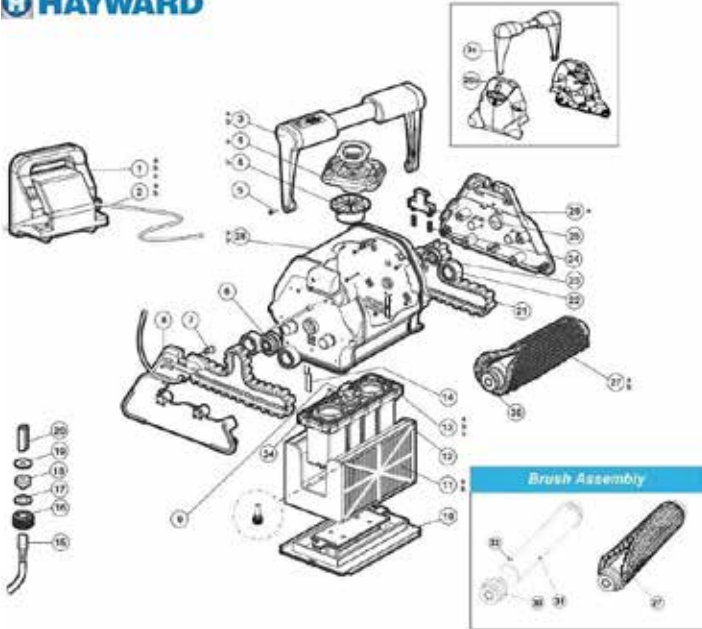
Limited stock left

4 MAINTENANCE & CLEANING EQUIPMENT

Tiger Shark 2

The Tiger Shark 2 is very similar to a Dolphin 3001. The two key differences are the lack of the Beachfront Entry Feature and the cord swivel. The current Tiger Shark 2 comes with a caddy cart, 100' cord, ac power supply/transformer, cartridge filter and 7 hour motor cycle. The unit is CSA approved. **The warranty is 1 year**, and excludes consumables, specifically the drive tracks, drive bearings and filter cartridge.

| Model No. | Description | Price |
|-----------|---------------|-----------|
| RC9956 | Tiger Shark 2 | \$2224.30 |



| Part No. | ID# | Description | Price |
|-------------------------|-----|---------------------|---------|
| Wheel Tube Parts | | | |
| RCX26004 | #31 | Wheel Tube | \$19.34 |
| RCX26005 | #30 | Wheel Tube Bearing | \$42.64 |
| RCX3406 | #33 | Screw #4 x 3/8 Flat | \$2.44 |

TIGER SHARK 2 PARTS

| Part No | ID# | Description | Price |
|------------|------|-------------------------------------|----------|
| RCX97453 | #1 | Power Supply | \$395.20 |
| RCX50110 | #2 | 100' Floating Cord | \$387.92 |
| RCX31009 | #28 | Amphenol Connector | \$47.53 |
| RCX76000 | #3 | Handle Assembly - Teal- Old | \$80.53 |
| RCX97007 | #3C | New Style-Grey Handle | \$83.20 |
| RCX11208 | #4A | Venturi Assbly - New Style | \$35.36 |
| RCX12011 | #5 | Handle Screw T5 X 20 | \$6.29 |
| RCX26001 | #6 | Idler Pulley | \$57.20 |
| RCX14000 | #7 | Handle Slide | \$7.70 |
| RCX12001 | #8 | Side Plate Screw M4 X 12 | \$5.46 |
| RCX11000 | #9A | Impellor | \$19.98 |
| ACX12002 | #9B | Screw M4x2 | \$5.46 |
| RCX75000 | #10 | Bottom Lid Assembly | \$96.72 |
| RCX70101 | #11 | Cartridge Refill (2) | \$90.48 |
| RCX70100 | #12 | Frame with Filters | \$172.24 |
| RCX41000DC | #13 | Motor Unit 7Hour | \$770.64 |
| RCX11400 | #14 | Lid Clip | \$7.80 |
| RCX59006 | #15 | Connector | \$2.91 |
| RCX59004 | #16 | Sealing Nut | \$6.50 |
| RCX12302 | #17 | Plastic Washer - large hole | \$4.06 |
| RCX59003 | #18 | Rubber Seal | \$10.35 |
| RCX12301 | #19 | Plastic Washer small hole | \$4.06 |
| RCX59002 | #20 | Connector Housing | \$6.14 |
| RCX23002 | #21 | Drive Track | \$53.04 |
| RCX26000 | #22 | Track Guide Wheel | \$42.90 |
| RCX26002 | #23 | Drive Pulley | \$50.96 |
| RCX12100 | #24 | Spring-handle latch | \$5.15 |
| RCX14100 | #25 | Handle Latch | \$9.05 |
| RCX97201 | #26 | Side Cover - Old Style - Light Grey | \$34.32 |
| RXC97201 | #26B | New Style Side Cover - Dark Grey | \$37.44 |
| RCX26008 | #27 | Roller Brush | \$40.56 |
| RCX 13001 | #28 | Main Case | \$190.48 |

Bottom Lid Parts

Note: These also fit Old Style Dolphin Bottom Lids

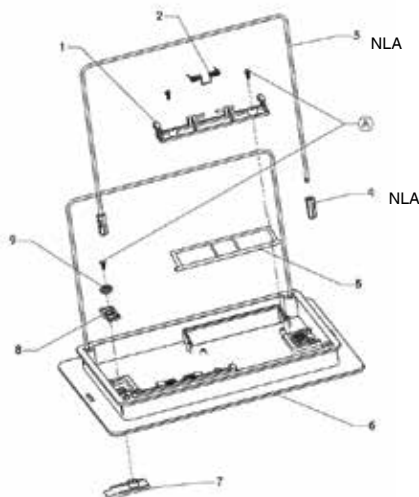
| Part No | ID# | Description | Price |
|----------|-----|-----------------|---------|
| RCX75001 | #1 | Lid Base | \$40.04 |
| RCX78005 | #2 | Gasket | \$34.32 |
| RCX75002 | #3 | Clip Support | \$5.46 |
| RCX75003 | #4 | Locking Plate | \$7.54 |
| RCX75004 | #5 | Clip Follower | \$2.44 |
| RCX12101 | #6 | Spring | \$5.15 |
| RCX12101 | #7 | Spring Retainer | \$2.55 |
| RCX12008 | #8 | Screw | \$2.76 |
| RCX75005 | #9 | Inlet Flap | \$9.31 |

DOLPHIN PARTS LIST

| Part | Dia. # | Description | Price |
|----------|--------|--|----------|
| 9985007 | * | Track New Style - Yellow | \$39.99 |
| 3884997 | 28 | Guide Wheel | \$30.00 |
| 5000009 | 26 | Amphenol Plug | \$36.00 |
| 6203703 | 16 | Filter Screen | \$19.50 |
| 6101303 | 12 | PVC Brush 3001 - red | \$21.00 |
| 9995430 | 14 | Filter Bag | \$84.50 |
| 9981430 | 13 | Filter Bag Clip | \$3.85 |
| 9985061 | 7 | Handle Latch | \$3.78 |
| 9985065 | 8 | Handle Arm Slide | \$1.29 |
| 3884073 | | Wheel tube bearing- New | \$28.00 |
| 9991279 | 18 | Cable Connector Assembly - 3 pin | \$9.87 |
| 9995053 | 23 | Side Plate - yellow with cable fitting | \$30.35 |
| 9985081 | 9 | Side plate - no hole or fittings for cable | \$30.80 |
| 9995075 | 2 | Impellor Tube - red | \$13.50 |
| 9995188 | 1 | Outer Casing Yellow/Red | \$181.00 |
| 9995269 | 20 | Impeller (Screw on top) | \$14.00 |
| 3883645 | 31 | Drive Pulley - New - TT | \$35.00 |
| 9995678 | 32 | Power supply | \$375.00 |
| 598412LF | | Power supply cord 115v | \$25.00 |
| 9995685 | 4 | Handle Red & Yellow | \$48.00 |
| 9995741 | 3 | Handle Float - yellow | \$17.75 |
| 9995359 | 19 | 3001 Diag Motor Unit | \$449.00 |
| 9995802 | | Cable Assembly with swivel 30M | \$449.00 |

Dolphin Bottom Lid-new style-spring loaded inlet flaps

| Part # | Description | Price |
|---------|--------------------------|---------|
| 9995550 | Bottom lid assembly | \$49.00 |
| 9995892 | Parts Kit for bottom lid | \$18.90 |



Caddy Cart Parts:

| Part | Description | Price |
|---------|-----------------------------|----------|
| 9996098 | 33 Caddy Cart -complete | \$191.75 |
| 6101900 | Handle for Caddy # 1 | \$41.75 |
| 9996079 | Wheel Assembly for Caddy #5 | \$35.00 |
| 9986055 | Hook for caddy # 2 | \$14.00 |
| 9991098 | Caddy Handle, New Style | \$45.00 |

Dolphin HD Parts

| | | |
|---------|-----------------------|----------|
| 9995365 | HD Motor Unit 4 hours | \$631.00 |
|---------|-----------------------|----------|

Dolphin HD uses all parts in common to 3001.

Dolphin Dynamic Pro X Parts

Pro X parts not listed below are in common with other models listed above

| Part | Dia.# | Description | Price |
|------------|-------|------------------------------|----------|
| 9995747LF | 30 | Cable Assembly 3 Wire | \$575.00 |
| 9995178 | 38 | Outer Casing | \$101.00 |
| 9995332-EX | 23 | Rblt Motor-Exchange | \$875.00 |
| 99955955 | 13 | Wheel Tube Assembly | \$53.25 |
| 9985089 | 9 | Pro X Side Plate no hole | \$31.00 |
| 9995051 | 25 | Pro X Side Plate W/cable fit | \$31.00 |
| 6101635 | 12 | PVC Brush | \$17.90 |

Wave 75 Parts

| Part No | Description | Price |
|----------|---------------------------------|----------|
| 99957074 | Handle | \$60.25 |
| 99951916 | Outer Casing | \$113.25 |
| 9980630 | Frame | \$37.00 |
| 99806415 | Side Panel | \$9.75 |
| 99919117 | Bottom Lid, bag | \$47.00 |
| 9991414 | Bottom Lid, cartridge w/filters | \$174.00 |
| 9982330 | Button Lid, Latch | \$5.20 |
| 9991425 | Filters | \$110.00 |
| 9995369 | Motor Assembly | \$585.00 |
| 9995678 | Power Supply | \$415.00 |
| 9995875 | Cable Assembly 75' c/w swivel | \$575.00 |
| 9982330 | Wave 75 Bottom Lid Latch | \$5.20 |

See page 58 for parts diagram.

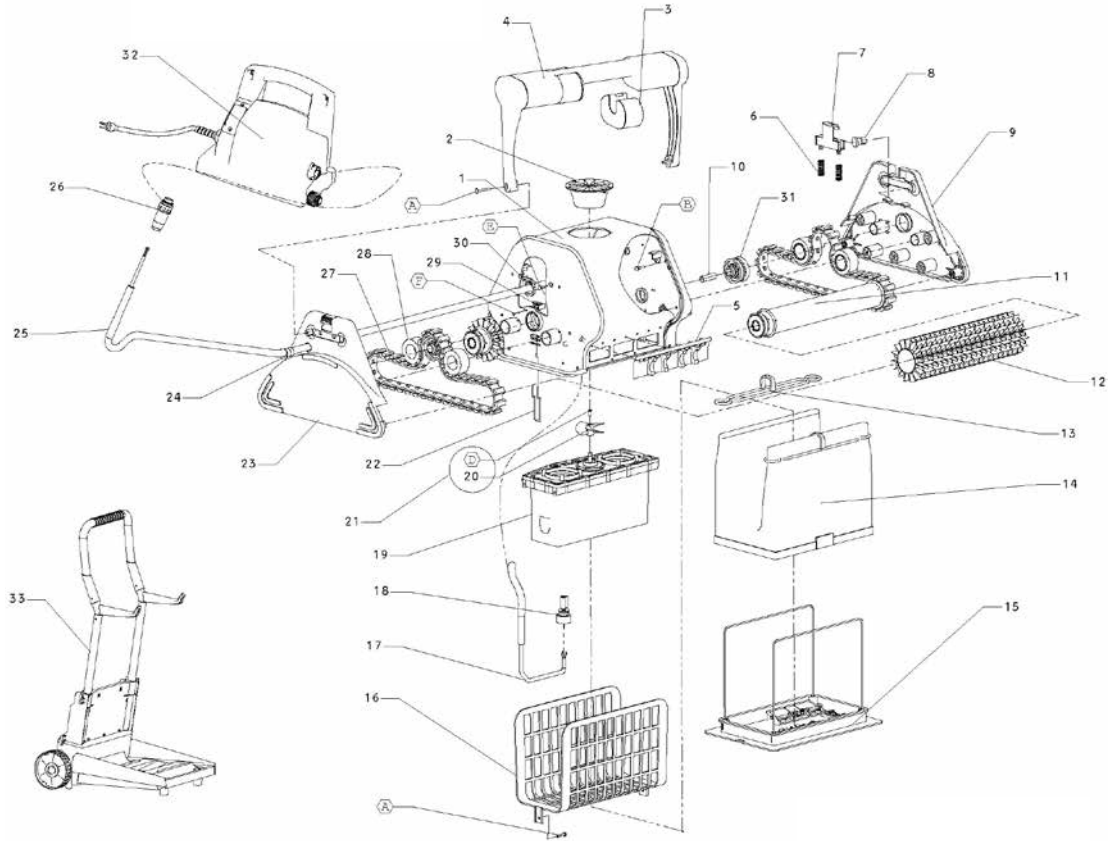
Wave 100 Parts

| Part No | Description | Price |
|-----------------|--------------------------|----------|
| 9995721 | Handle | \$72.50 |
| 99954226-assy | Remote Control | \$147.00 |
| 9981091 | Side Plate no hole #7 | \$36.45 |
| 9995043 | Side plate with hole #28 | \$36.45 |
| 99951713 | Outer Casing | \$181.00 |
| 9981044 | Impellor Cover | \$9.00 |
| 9995755LF-assy | 35M Cable assembly | \$725.00 |
| 9995671-us-assy | Power Supply | \$415.00 |
| 9995332 | Motor | \$695.00 |

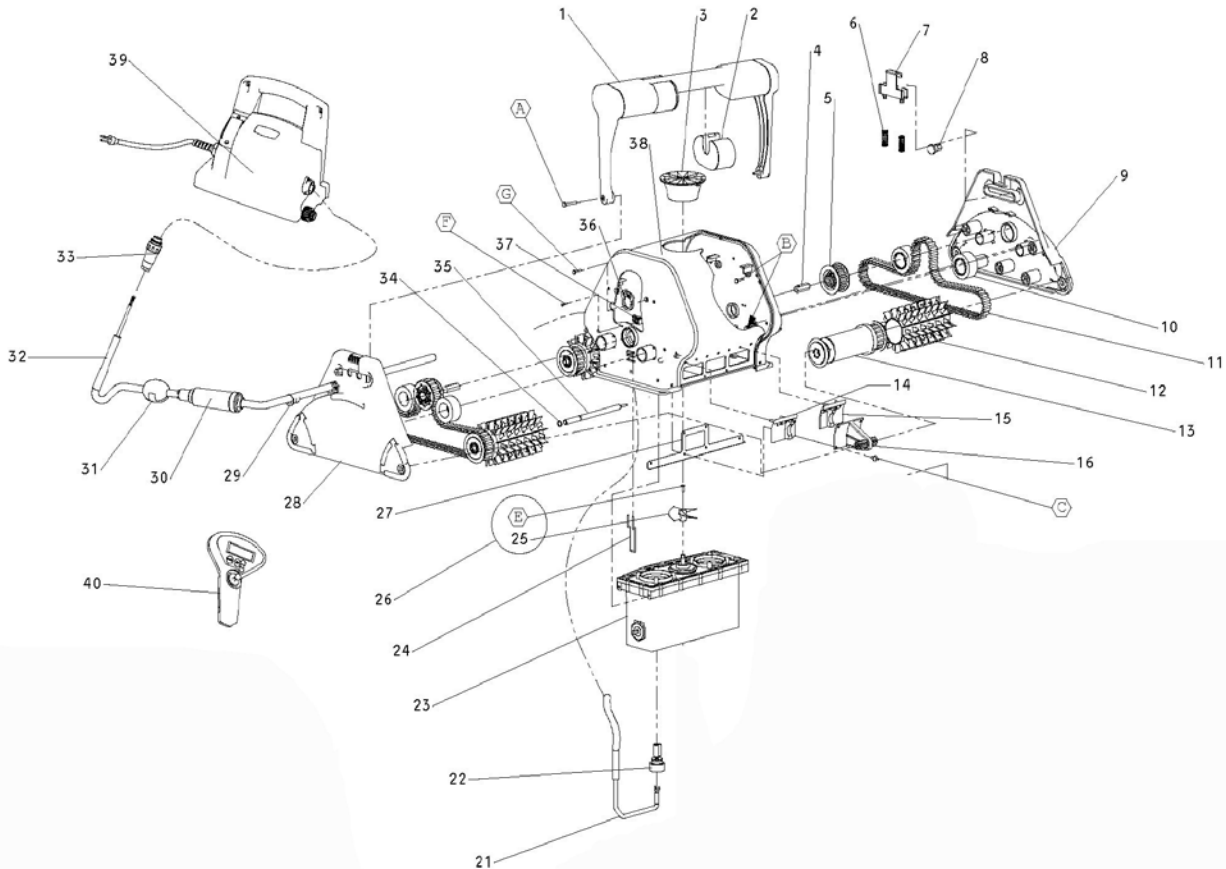
See following pages for Dolphin parts diagrams

4 MAINTENANCE & CLEANING EQUIPMENT

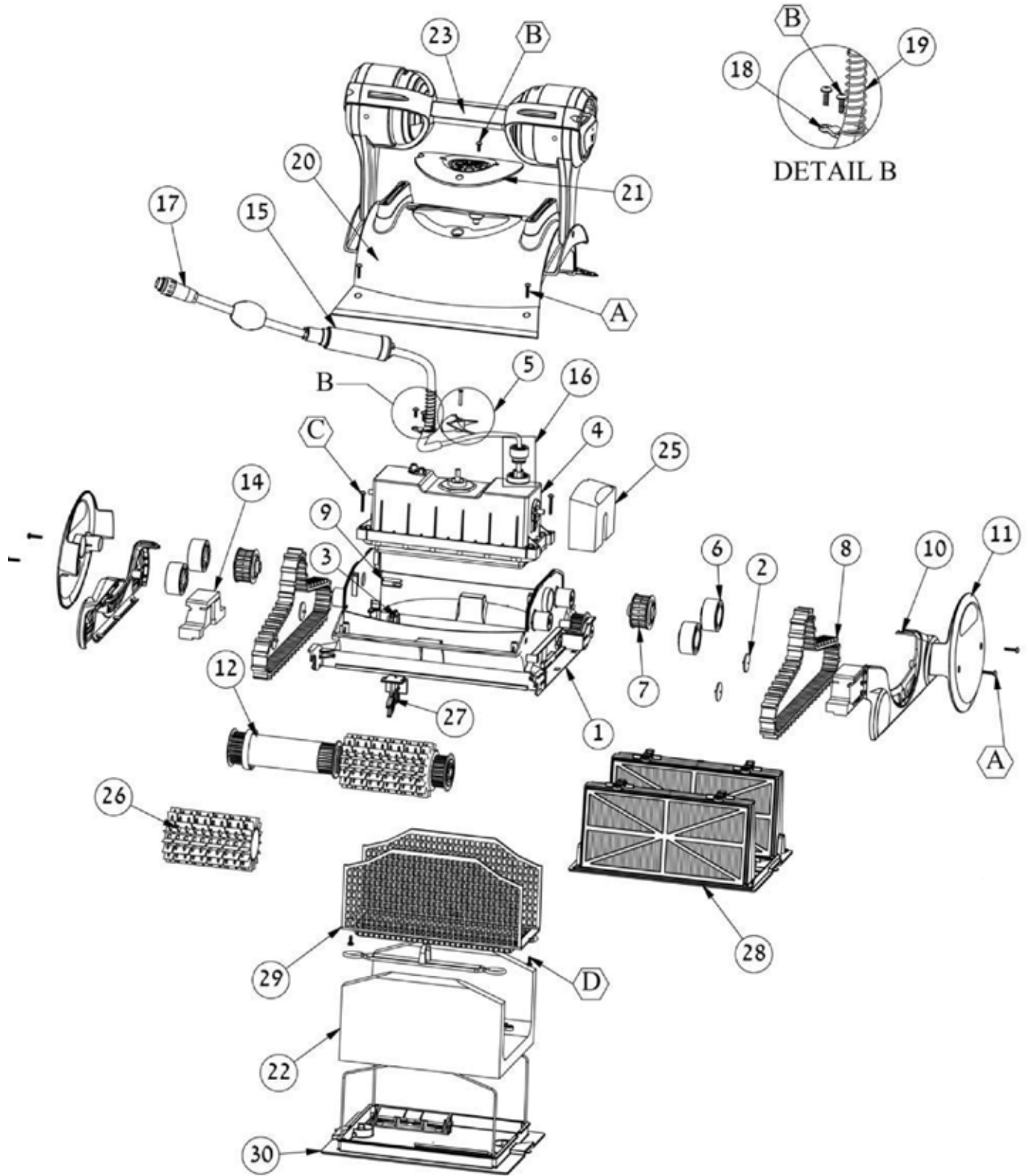
DOLPHIN DC DIAGNOSTIC (3001) & HD



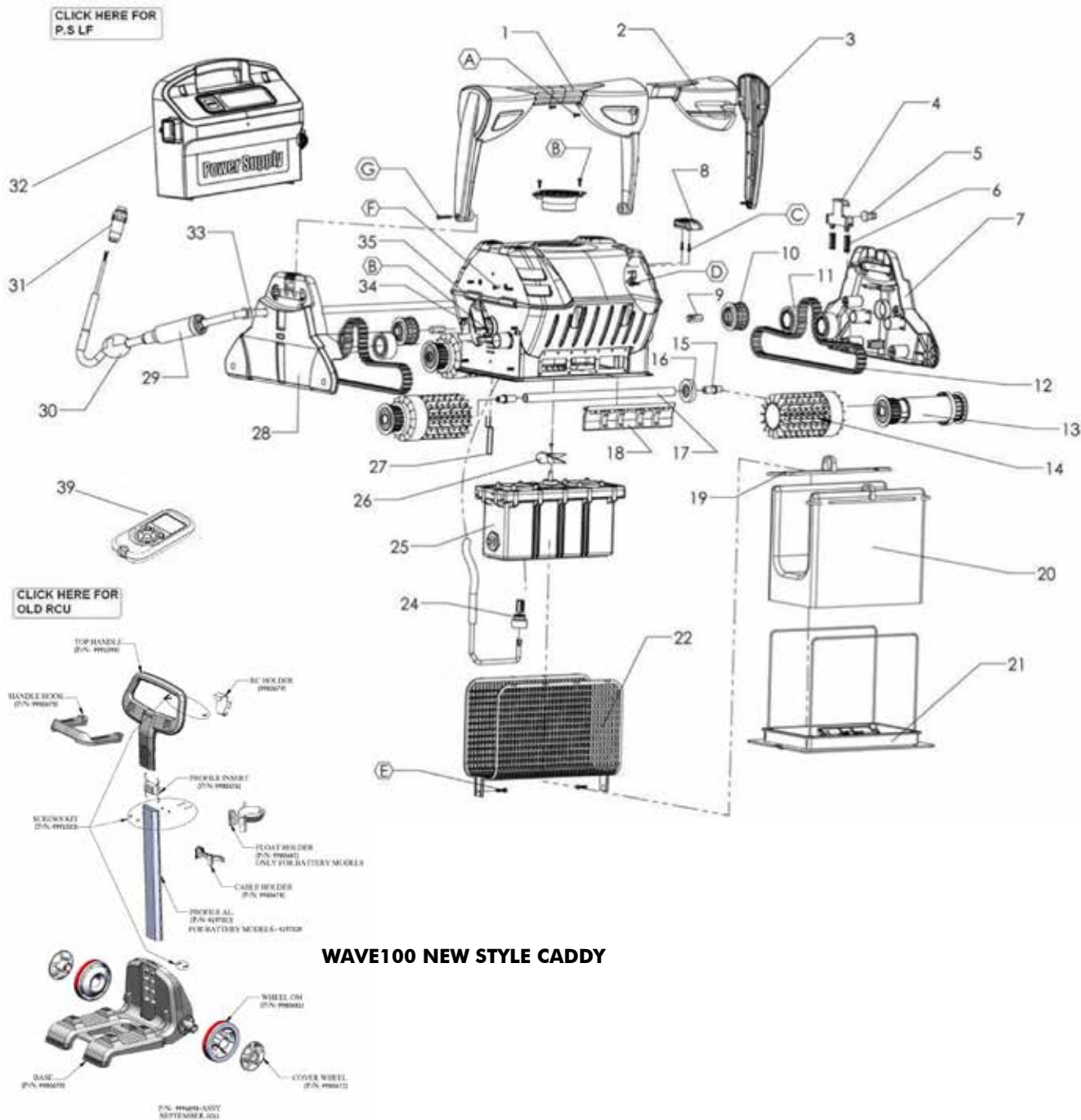
DOLPHIN DYNAMIC PRO X (3002)



WAVE 75



WAVE 100



WAVE100 NEW STYLE CADDY

Commercial Aquatics is a factory authorized Warranty and Repair Centre for Hayward and Maytronics Commercial Robotic Pool Cleaners and to facilitate repairs and minimize down times substantial parts inventories are maintained.