

## PAC FAB Triton II Sand Filters

Pac Fab's Triton fibreglass filters are rated for public pool use and are easily adaptable to multi unit installations. Tritons are commonly used on Whirlpools, Tot Pools, and smaller Institutional Pools. This filter offers the best price point for a fibreglass commercial filter.

Key advantages of Triton Filters include it is a proven filter (with thousands of installations in place), parts are readily available (and reasonably priced), and Tritons are straight forward to work on. Filters are supplied complete, only the filter media needs to be ordered separately.

Specification sheets are available. Pac Fab also makes 'commercial' and 'heavy-duty' (C) versions of the Triton.

### Capacity and Ordering Information

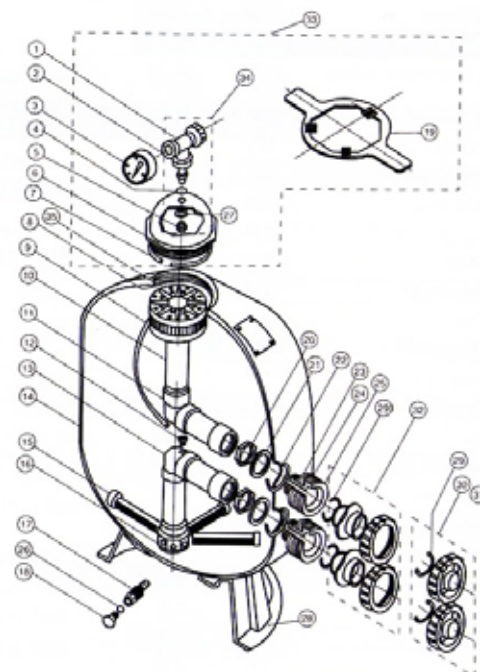
Model	Pump Size	Sq.Ft. of Filter Area	Pipe Size	15GPM per Sq.Ft. Ft. Rate	Gallons per 6 Hours	LBS #20 Filter Sand	*Price
TR-40 18"D	1/2 or 3/4hp	1.92	1-1/2"	29	10440	175lbs	\$708.40
TR-50 21"D	3/4 or 1hp	2.46	1-1/2"	37	13320	225lbs	\$772.15
TR-60 24"D	1 or 1-1/2hp	3.14	1-1/2"	47	16920	325lbs	\$950.45
TR-100 30"D	1-1/2 or 2hp	4.91	2"	74	26640	600lbs	\$1324.87
TR-100C	1-1/2 or 2hp	4.91	2"	74	26640	600lbs	\$1394.82
TR-140 36"D	2 to 3hp	7.06	2"	106	38160	925lbs	\$1872.10
TR-140C	2 to 3hp	7.06	2"	106	38160	925lbs	\$1994.16

\*Pricing includes filter and matching pre-plumbed dial valve.



## Triton Filter Replacement Parts

Dia #	Part #	Description	Price
1	154689	Air Bleeder Tee Assembly	\$40.09
2	154700	Adapter	\$16.30
3	100-60	Gauge, back mount	\$19.52
4	154661	Adapter o-ring	\$2.43
5	154664	Adapter nut	\$2.38
6	154570	Closure Dome, buttress thread	\$113.94
6	154559	Closure Dome, V thread,	\$75.96
7	154493	Closure Dome o-ring	\$7.28
8	150035	Strainer for air relief tube - 99 on 3/8" OD	\$19.15
9	154438	Air Relief Tube TR 140	\$32.71
10	154906	Diffuser, TR 140	\$72.80
11	154500	Upper piping Assembly, TR 140	\$67.52
12	150036	Air Relief Tube Connector - 99 on 3/8" OD	\$2.11
13	154489	Lower Piping Assembly TR 140	\$79.13
14	000000	Replacement tanks	POR
15	152290	Lateral TR 40-60 to 7 July 07	\$10.34
	150085	Lateral TR 60, after 7 Jul7 07	\$11.76
	152202	Lateral TR 100	\$14.14
	154540	Lateral TR 140	\$29.54
16	154763	Hub TR 40-60 to 7 July 07	\$43.26
	155753	Hub TR 60 after 7 July 07	\$60.14
	154453	Hub Tr 100-140	\$145.59
17	152220	Sand Drain 2"	\$61.19
17	154698	3/4 Sand Drain	\$35.87
18	357161	1/4" Drain Plug	\$5.54
19	154512	Wrench	\$35.87
20	154412	2" Internal Locknut	\$13.50
21	154416	2" Internal Spacer	\$19.68
22	154492	Bulkhead o-ring	\$3.59
23	154408	2" External Spacer	\$19.68
24	154538	Bulkhead gasket	\$2.95
25	154405	2" Bulkhead Fitting	\$101.28
26	192115	Drain Plug o-ring	\$1.74
27	154418	Washer, 3/8" SS	\$1.64
28	154596	Foot TR 140	\$204.67
29	274494	O-ring, valve adapter	\$6.64
33	154641	Closure Kit, 6" Buttress thread	\$269.05
34	154687	Fitting Package, w/o gauge	\$66.47



BLACK TANK



Detail A, (after 12/1/91)  
6 in. btr. Thread.