

## LMI PUMP PARTS

When ordering please have your pump model number and tube size available.

### Liquiframs (9)

Part No.	Description	Price
30916	.5 PFA	\$78.75
30917	.9 PFA + 300 series	\$93.75
31420	1.8 PFA+ 300 series	\$102.08
31419	3.0 PFA+ 300 series	\$137.45
10973	Shaft seal (not shown)	\$9.28

### SS Spring

37341	Springs	\$9.50
-------	---------	--------

### Injectors (1)

25687	Injector 1/2"	\$112.53
10501	Injector 3/8"	\$102.10
30919	Injector 1/4"	\$143.75
27352	Flapper valve	\$12.35
10294	Injector body	\$31.00
38026	Injector 3/8 300 series	\$104.25
37351	Injector body 3/8 300 series	\$48.75
37349	Injector valve assembly 300 series	\$21.90
48728	Injector 3/8" New Style	\$108.45

### Coupling Nuts (14)

10411	Coupling Nut 1/2"	\$12.56
10299	Coupling Nut 3/8"	\$9.70
77383	Coupling Nut & Ferrules 3/8" New Style	\$11.30

### Seal Rings

10207	Seal Ring Neoprene Black	\$14.47
10407	Seal Ring Teflon White	\$14.47
29443	Seal Ring 3 Part Black	\$13.30

### Discharge Valve Housing

10493	Discharge Valve Housing 1/2"	\$37.68
10293	Discharge Valve Housing 3/8"	\$30.00
30375	Discharge Valve Housing 1/4"	\$18.60

### Valve Body 300 Series (12)

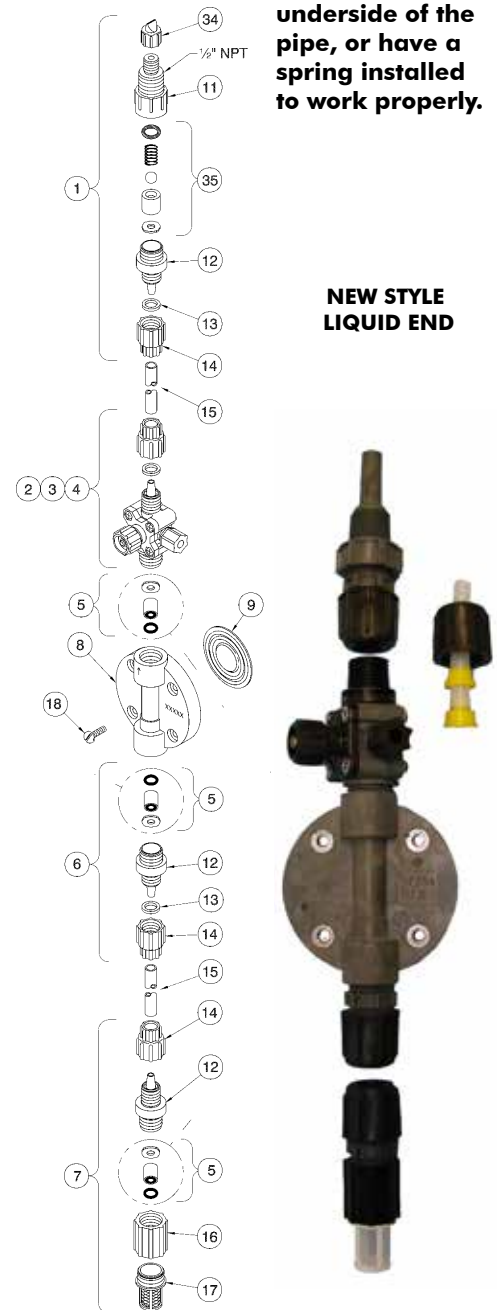
37763	Valve Body 1/4 300 series	\$18.60
37765	Valve Body 3/8 300 series	\$18.60
37769	Valve Body 1/2 300 series	\$18.60
48787	Valve body 3/8" New Style	\$17.35

### Foot Valve Assembly (7)

25204	Foot Valve Assembly 1/2"	\$102.13
27603	Foot Valve Assembly 3/8"	\$91.69
30921	Foot Valve Assembly 1/4"	\$79.18
25492	Foot Valve Assembly Autoflush	\$137.43
10978	Valve seat (#16)	\$18.82
38032	Foot valve 3/8 300 series	\$93.75
36204	Foot valve coupling 300 series (#12)	\$33.71
49100	Foot Valve 3/8" New Style	\$93.75

TYPICAL LIQUID END

**NOTE:** Injectors should be installed vertically on the underside of the pipe, or have a spring installed to work properly.



NEW STYLE LIQUID END

**REPAIR CENTRE FOR LMI PUMPS:**  
Commercial Aquatic Supplies is a factory authorized warranty and repair centre for LMI Pumps and stock all common replacement parts.

## 2 MECHANICAL EQUIPMENT



### Clamp Rings (13)

Part No	Description	Price
26136	Clamp Rings 3/8"	\$0.50
28663	Ferrules 1/4" + 300 series	\$0.93
37203	Clamp Ring 1/2"	\$1.59
50509	3/8 Plastic Ferrules	\$3.98



### Ceramic Balls

10338	Ceramic Ball	\$3.12
-------	--------------	--------

### Screens (17)

10123	Foot Valve Screens	\$13.99
-------	--------------------	---------

### Suction Valve Housing

10492	Suction Valve Housing 1/2"	\$33.18
10292	Suction Valve Housing 3/8"	\$26.02
30383	Suction Valve Housing 1/4"	\$18.60



300 SERIES  
3FV #38054

NEW STYLE  
3FV #49148

### Liquid Heads (8)

37752	Head 0.9 300 series	\$120.79
37754	Liquid Head 1.8 300 Series	\$187.61
37756	Liquid Head 3.0 300 Series	\$239.54
10340	Head Screw	\$1.05

### 3 Function Valve (3FV)(2,3,4)

3 FUNCTION VALVES have a "prime" knob so you can depressurize the discharge line without opening fittings.

38054	3FV 3/8 300 series	\$97.95
36260	Knob Assembly	\$26.71
35716	Screw 6 - 32 x 1 1/4" ss	\$1.17
25628	Nut 6 - 32 ss	\$1.17
49148	3FV 3/8" New Style	\$89.65



### Cartridge Valve (5)

36307	Cartridge valve 3/8 300 series	\$40.02
-------	--------------------------------	---------



## PULSATRON CHEMICAL FEED PUMP & PARTS

All pumps listed, include bleed valve, foot valve, weight and spring loaded injector. All pumps have stroke and speed control. PVC liquid ends are suitable for both sodium hypochlorite (bleach) and Muriatic acid solution.

### Pumps

Model	Capacity	Tube size	Price
LE13SA-VTC1	12 GPD @ 150 PSI	3/8" OD	\$814.75
LE14SA-VHC1	24 GPD @ 100 PSI	3/8" OD	\$811.45
LE44SA-VHC1	44 GPD @ 100 PSI	3/8" OD	\$1048.50
LPK5SA-VHC3	60 GPD @ 150 PSI	1/2" OD	\$1593.65
LPH6SA-VHC3	120 GPD @ 100 PSI	1/2" OD	\$1533.05
LPK7SA-WHC3	192GPD @ 50 PSI	1/2" OD	\$1696.75
LPH7SA-WTC3	240GPD@35 PSI	1/2" OD	\$1755.25

