

GAS DETECTORS

Chlorine Gas Detectors/Monitors

DCC Chlorine gas detectors continuously monitor chlorine at one remote point. They incorporate a digital display (range 0-5ppm), an audible alarm with silence button, 2 alarm relays and the sensors are provided in watertite enclosures. The remote sensor has a water tight enclosure, audible alarm, 1 relay, digital display and power requirements are 110 volts. The alarm is two stage, warning and alarm.

Item No	Description	Price
12 25 01	DCC Single Channel Cl2	\$1680.85
12 25 09	Replacement LPT series CL2 sensor	\$495.00



DCC GAS DETECTOR



REMOTE GAS SENSOR

CHLORINE BOOSTER PUMPS

Franklin (Jacuzzi) Series C Jet Pump - Cast Iron

Performance:	5C	6 GPM at 50 PSI	63 PSI maximum
	7C	9.5 GPM at 50 PSI	61 PSI maximum

NOTE: This pump will withstand dry or hot running.

Item No	HP	Description	Voltage	Price
12 23 08	1/2	Jacuzzi 5C	115/230	\$745.49
12 22 09	3/4	Jacuzzi 7C	115/230	\$794.24



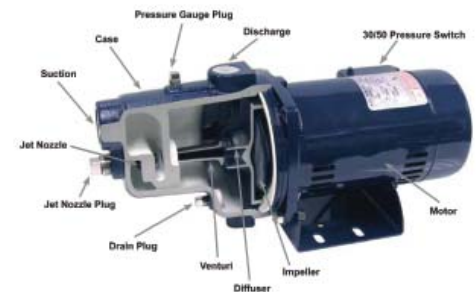
Franklin Versajet Booster Pumps

Versajet Pro pumps by Franklin feature A.O. Smith motors in 110/220 volts and single phase. The pumps have a cast iron volute, SS motor shaft, Noryl Impellers, Diffusers and Jet Nozzles with a SS wear ring. The seal is Ceramic and carbon. 1.25" suction by 1" discharge.

Performance with standard nozzle:

1/2 HP	6.3 GPM @ 50 PSI	86 PSI Max
3/4 HP	9 GPM @ 50 PSI	70 PSI Max
1.0 HP	24 GPM @ 50 PSI	66 PSI Max

Item No	HP	Description	Voltage	Price
12 22 70	1/2	Versajet Pump	110/220	\$549.75
12 22 71	3/4	Versajet Pump	110/220	\$609.15
12 22 72	1	Versajet Pro Pump	110/220	\$849.72



NOTE: All pumps supplied as 110/220 VAC single phase unless otherwise requested. Other voltages available on request.

2 MECHANICAL EQUIPMENT

Parts - Cyclone Pump

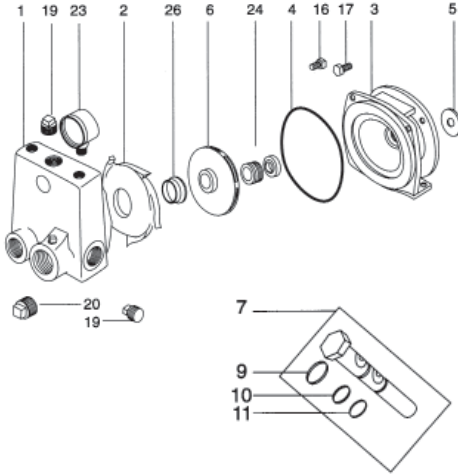
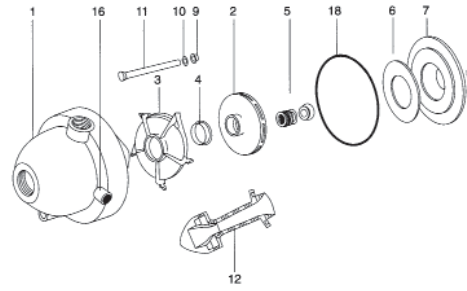
Part No	Dia. No	Description	Price
03-0873-00	1	Case	\$169.35
05-3922-04	2	Impeller 1/2 HP	\$83.55
05-3923-03	2	Impeller 3/4 HP	\$83.55
08-0845-19	4	Wear ring #4	\$17.05
CRA/T66	5	Mech Seal ^{5/8} /PS3960	\$45.85
11-1502-08	6	Disk #6 5cy	\$18.25
11-1503-07	6	Disk #6 7 cy	\$18.25
11-1521-05	7	Seal Plate #7	\$53.55
18-0449-09	12	Venturi 5cy	\$59.50
18-0450-05	12	Venturi 7cy	\$62.45
Impellor Kit - included Impellor, diffuser, wear ring mech seal, o-ring & disc. 1/2 or 3/4 HP.			\$151.55

Jacuzzi C Pump - Cast Iron Body

03-0055-01	1	Case	\$430.75
06-0111-00	2	Diffuser 5C	\$47.55
06-0112-09	2	Diffuser 7C	\$51.45
02-1052-03	3	Bracket 5C	\$282.15
02-1053-02	3	Bracket 7C	\$282.15
13-1247-06	4	Square Ring	\$11.90
05-3074-00	6	Impeller 5C-SS	\$242.85
05-3075-09	6	Impeller 7C-SS	\$247.85
18-1706-05	7	Injector 5C	\$78.85
18-1707-04	7	Injector 7C	\$78.85
CRA/T66	24	Mech Seal 5/8	\$45.85
08-0845-19	26	Wear Ring	\$17.05

Versajet Pro Pump Parts

305367902	B	Nozzle & Venturi set - 1/2hp	\$23.85
305367903	B	Nozzle & Venturi set - 3/4 hp	\$23.85
305367904	B	Nozzle & Venturi set - 1 hp	\$27.20
305368901	C	O-ring set 1/2 hp	\$8.65
305368902	C	O-ring set 3/4 & 1hp	\$8.10
30570902	E	Impellor, Diffuser, & Wear Ring-1/2 hp	\$96.70
30570903	E	Impellor, Diffuser, & Wear Ring-3/4 hp	\$108.40
30570904	E	Impellor, Diffuser, & Wear Ring-1hp	\$91.45
305371901	F	Mechanical Seal 1/2 hp	\$33.95
305371902	F	Mechanical Seal 3/4 & 1hp	\$33.50
305372901	G	Seal Plate 1/2 hp	\$71.15
305372902	G	Seal Plate 3/4 & 1hp	\$149.90
305376901	L	Pump Case 1/2 hp	\$190.15
305376902	L	Pump Case 3/4 & 1hp	\$227.75



VERSAJET Models: 1/2, 3/4 & 1 HP

