

### GAS DETECTORS

#### Chlorine Gas Detectors/Monitors

DCC Chlorine gas detectors continuously monitor chlorine at one remote point. They incorporate a digital display (range 0-5ppm), an audible alarm with silence button, 2 alarm relays and the sensors are provided in watertite enclosures. The remote sensor has a water tight enclosure, audible alarm, 1 relay, digital display and power requirements are 110 volts. The alarm is two stage, warning and alarm.



DCC GAS DETECTOR



REMOTE GAS SENSOR

Item No	Description	Price
12 25 01	DCC Single Channel Cl <sub>2</sub>	\$1680.85
12 25 09	Replacement LPT series Cl <sub>2</sub> sensor	\$495.00



### CHLORINE BOOSTER PUMPS

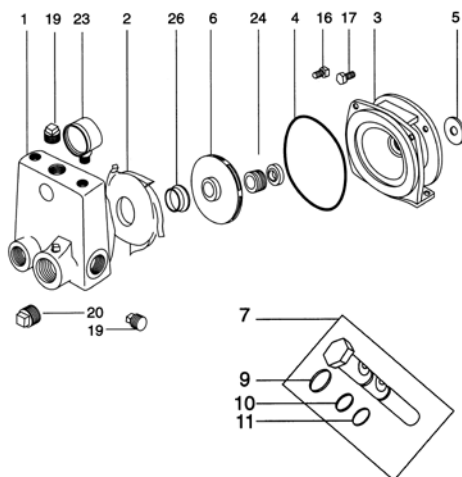
#### Franklin (Jacuzzi) Series C Jet Pump - Cast Iron

**Performance:** 5C      6 GPM at 50 PSI      63 PSI maximum  
 7C      9.5 GPM at 50 PSI      61 PSI maximum

NOTE: This pump will withstand dry or hot running.

Item No	HP	Description	Voltage	Price
12 23 08	1/2	Jacuzzi 5C	115/230	\$745.49
12 22 09	3/4	Jacuzzi 7C	115/230	\$794.24

#### Jacuzzi C Pump - Cast Iron Body



03-0055-01	1	Case	\$430.75
06-0111-00	2	Diffuser 5C	\$47.55
06-0112-09	2	Diffuser 7C	\$51.45
02-1052-03	3	Bracket 5C	\$282.15
02-1053-02	3	Bracket 7C	\$282.15
13-1247-06	4	Square Ring	\$11.90
05-3074-00	6	Impeller 5C-SS	\$242.85
05-3075-09	6	Impeller 7C-SS	\$247.85
18-1706-05	7	Injector 5C	\$78.85
18-1707-04	7	Injector 7C	\$78.85
CRA/T66	24	Mech Seal 5/8	\$45.85
08-0845-19	26	Wear Ring	\$17.05

**NOTE: All pumps supplied as 110/220 VAC single phase unless otherwise requested. Other voltages available on request.**