



**PARTS AVAILABLE**

**AQUANAIDS MARK II (OTTER):** 350# rating; suitable for in ground pools.

Item No	Description
17 030 70	Plastic Seat for Mark II
Other parts POR	



**PARTS AVAILABLE**

**AQUANAIDS MARK I LIFT:** 350# rating; well built, in ground & above deck level pools.

Model	Price
BS112	\$195.00

Custom lifts for special applications are available. Please inquire.

## ACCESS STEPS & LADDERS

### Therapy Ladder (Missoula ladder)

The sloping design makes pool access user friendly at a very good price. Rails are stainless steel 1.5" OD for easier gripping. Units are custom made for your pool. Anchor sockets and escutcheons sold separately.

Item No	Description	Model	Price
17 03 10	Therapy Ladder 3 step	25013	\$1705.00
17 03 11	Therapy Ladder 4 step	25019	\$1795.00
17 03 12	Therapy Ladder 5 step	25025	\$1910.00
17 03 15	Compression Anchor	24093	\$135.00
17 03 16	Compression Anchor Wrench	24094	\$57.15



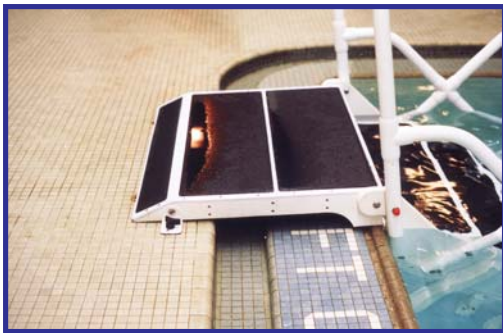
**This Therapy Ladder can be configured to work in deep water by being bent to return to the pool wall like a regular pool ladder.**

### Easy Ladder

No deck modifications required. Custom trimmed to fit depth, floor slope and coping. Easy Ladder is removable but is best suited to application where removal is occasional. Removal dolly included. Non-skid treads. Side skirts prevent swimmer entrapment. Models for pool corners or end wall. Durable fiberglass and stainless steel construction. **FOB Factory.**

Item No	Description	Price
17 06 01	Easy Ladder up to 48" from deck to pool floor	\$2225.75
17 06 02	Easy Ladder 48" to 58"	\$2787.50
17 06 03	Easy Ladder 59" to 68"	\$3235.95





**Custom Top Step**

## Aqua Step HD - for public pools

The Aqua Step HD is a lightweight pool step that is easily removed. Just one person is required to remove it.

Plastic steps come with stainless steel brace and are tested to a 1000 lb. load. Stringers are fabricated of recycled plastic and railings are plastic coated aluminium. Where aluminium railing would not work well (pools with salt generated Cl2) chose an all- acrylic railing or up grade to stainless steel railing.

Aqua Step fits virtually any pool shallow end. From the chart below choose the model the fits your pool depth at installation point. Where two models fit the same depth choose the one that makes sense to your user group and budget - more steps means less rise between steps but less steps saves money!!

An optional custom top step is available. Designed for applications where gutter is an irregular shape, the custom top step fits into the gutter to create a flush square edge that is not a trip hazard (See picture).

Step treads are large and easy to climb with good footing (30" wide model shown and priced. 36" wide model priced on request). Aqua Step is shipped knock down, some assembly is required. **Priced FOB Factory.**

Item No	Description	Pool Depth**	Price
17 05 01	Pool Access Steps 4 tread	34" to 45"	\$3335.50
17 05 02	Pool Access Steps 5 tread	41" to 55"	\$3766.50
17 05 03	Pool Access Steps 6 tread	48" to 64"	\$4209.00
17 05 07	Pool Access Steps 7 tread	56" to 74"	\$4677.00
17 05 09	Pool Access Steps 8 tread	63" to 84"	\$5179.50
17 05 09	Pool Access Steps 9 tread	70" to 95"	\$5801.15
17 05 10	Pool Access Steps 10 tread	77" to 105"	\$6121.50

### Options And Parts:

17 05 04	Custom Top Step	POR
17 05 05	Replacement Standard Top Platform	\$585.00
17 05 07	Replacement Step Plastic with SS brace 30" wide, replaces old style plastic or aluminium step	\$603.50

### Optional Sides and Risers when ordered with a step.

17 05 15	Sides and Risers for 4 step	\$449.00
17 05 16	Sides and Risers for 5 step	\$499.00
17 05 17	Sides and Risers for 6 step	\$569.00
17 05 18	Sides and Risers for 7 step	\$639.00
17 05 19	Sides and Risers for 8 step	\$699.00

*For Sides and Risers when ordered as an upgrade kit freight is Fob factory.*

## Aqua Step HD 30/36"



**\*\*Note:** depth refers to the distance from edge of deck (where top step will rest) to pool bottom; not just water depth. Low end of depth range given is about 7½ inch risers; middle of depth range is 8½ inch risers & high end of depth range is about 9½ inch risers. Standard stair riser is generally 8½ inches.

**NOTE: Sides and risers are now required in British Columbia.**